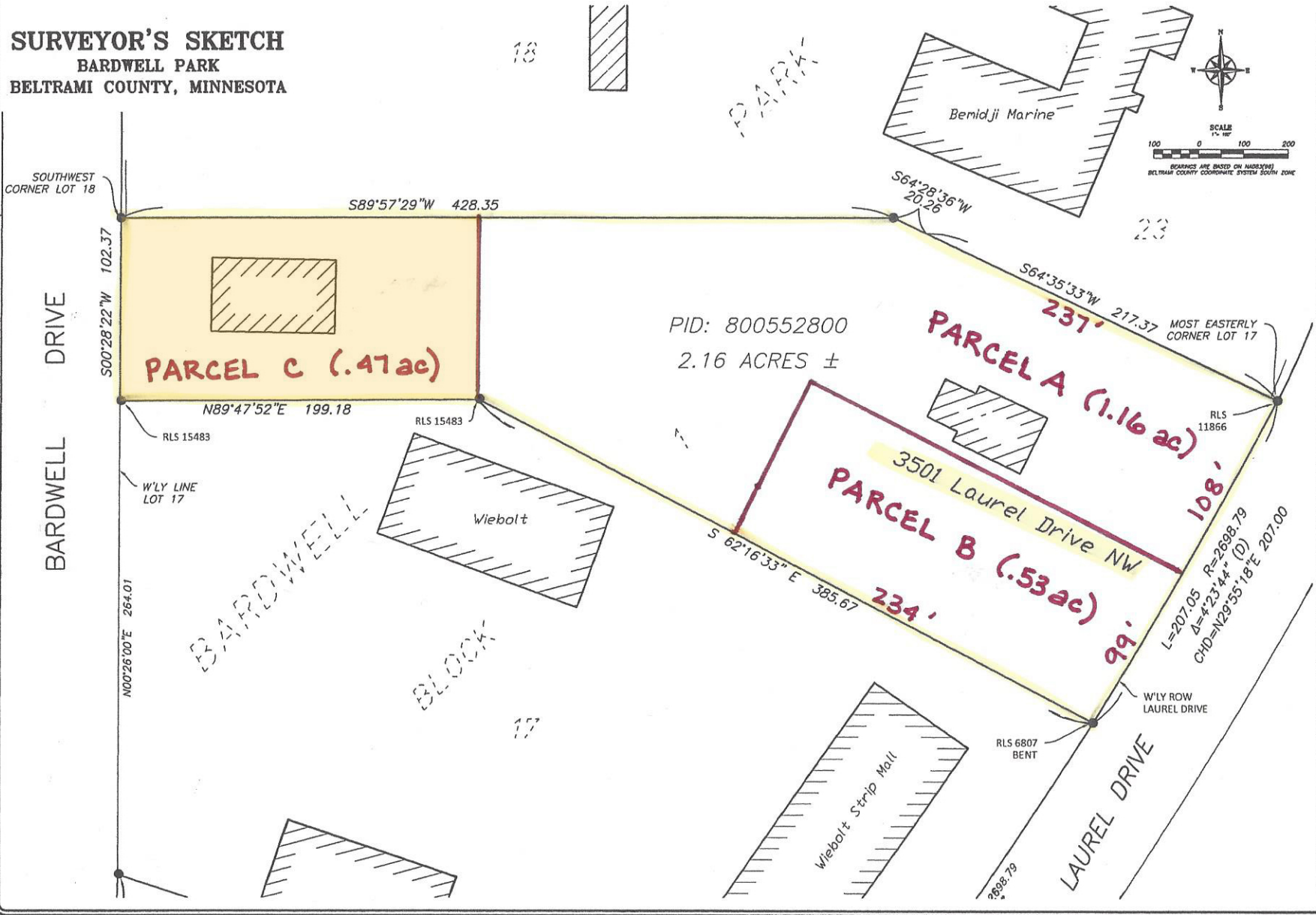


SURVEYOR'S SKETCH
BARDWELL PARK
BELTRAMI COUNTY, MINNESOTA



ENGINEERING • UTILITY LOCATION • UTILITY MARKING • 3D LASER SCANNING • 3D MODELS • PRELIM SERVICES
NORTHWESTERN
 Surveying & Engineering, Inc.
 100 Main Street, Bemidji, MN 56501 218-444-8304
 LAND SURVEYING • ENVIRONMENTAL SERVICES • ENVIRONMENTAL INSPECTION • CONSTRUCTION MANAGEMENT

PREPARED FOR:
 ETTESVOLD
 BARDWELL PARK
 SEC37-T147N-R33W
 COUNTY, MN

REV	DESCRIPTION	DATE

DRAWING NO.
1/1
 REV. NO.
A1

Potential lot division (to be negotiated)